



Overall System Specifications

Width	Depth	Height	Weight
28"	29.5"	73.6"	530 Lbs
712 mm	750mm	1870 mm	240 Kg

Battery Capacity

Battery Size	# per Cabinet
100 - 205WPC	40
280 - 300WPC	24
310 - 620WPC	24



CA-2 Battery Cabinet

The **CA Series** battery cabinets are designed to be integrated with top terminal, Valve Regulated Lead Acid (VRLA) batteries for Uninterruptible Power Supply (UPS) applications where space is at a premium. These cabinets are tested and labeled to UL-1778 when shipped fully assembled with batteries. The CA-2 features an exclusive design for ease of installation, maintenance and multiple cabinet paralleling.

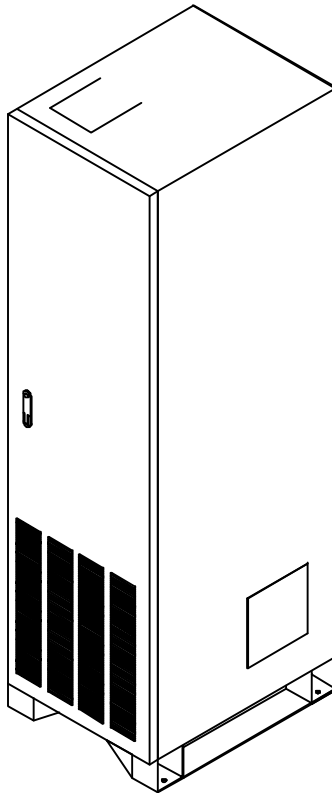
Standard Features

- Factory assembled cabinets are listed to UL 1778
- Fully tested and inspected prior to shipment
- Hi-Pot tested prior to shipment
- Acid resistant powder coat including pretreatment
- Fully ventilated in the front, top and rear
- 600V thermal magnetic DC breaker for over-current protection
- MTW 600V, 105°C flexible cable
- Seismic certified to CBC2013 & IBC2012, Design D, $S_s=3.370$ and $S_1=1.389$ given by USGS
- Hinged, removable front door with locking latch
- Removable side panels
- Breaker plate has rear cable routing & strain relief knockouts for running cables to multiple cabinets
- Side mount holes to bolt multiple cabinets together
- Batteries accessible from front or rear

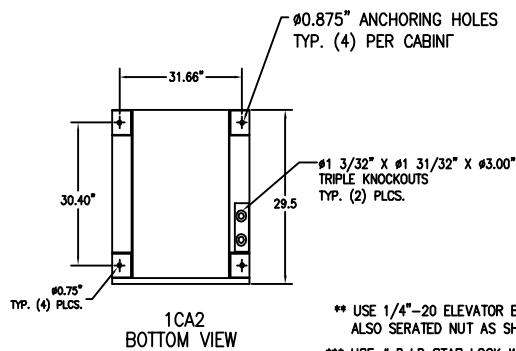
Available Options

- Breaker options of UVR/Shunt and auxiliary contacts
- Home run cables from each breaker to breaker/UPS landing cabinet
- Landing bus bars or terminal block for parallel cabinet connections
- Wall mount circuit breakers
- High temperature alarm
- Front door Plexi window
- Smoke detector
- Battery monitors
- Ground fault detector
- Spill containment
- Custom colors
- SOS (Spares On Site) systems

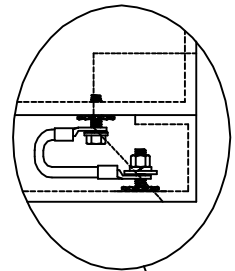
Mechanical Drawing



ISOMETRIC VIEW
1CA2



GROUND CABLE MUST BE
PLACED BETWEEN GROUNDING
STUD AT THE DOOR, AND
CABINET CHASSIS (USE 5/16
SELF-THREADED BOLT)

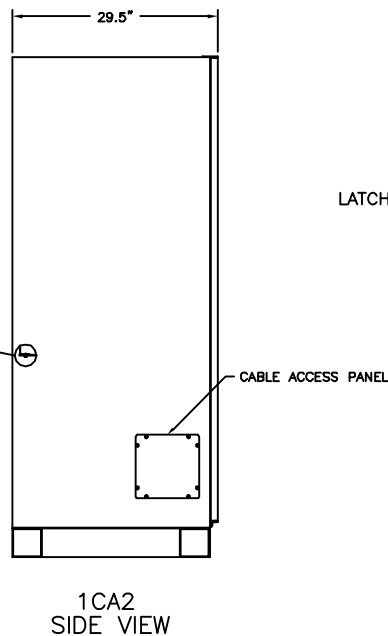
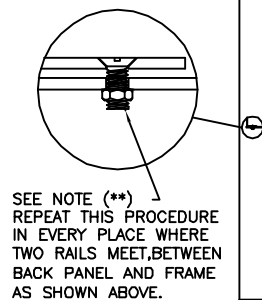
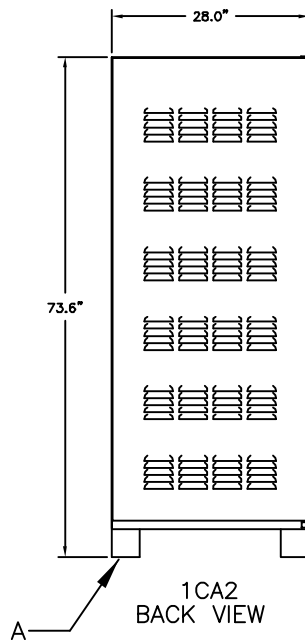


SEE NOTE ***

CABLE ACCESS PANEL

1CA2
TOP VIEW

** USE 1/4"-20 ELEVATOR BOLT FOR GROUNDING
ALSO SERATED NUT AS SHOWN
*** USE # 8 I.D STAR LOCK WASHERS FOR
GROUNDING UNDER HEAD OF SCREW



LATCH

B

